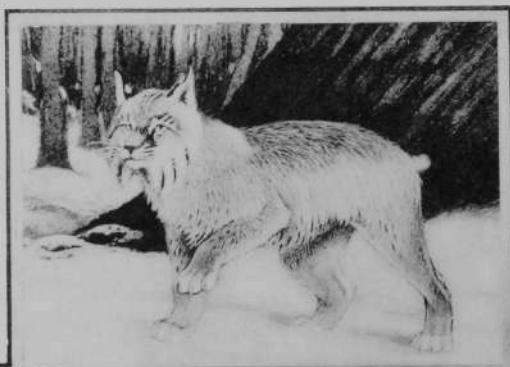


TYPICAL MAMMALS AND HABITATS OF THE



The above layout shows: (Upper left to right) Canadian Lynx, originally common of the choicest fur bearers, which ranges in the Canadian Zone from Quebec to British

(Middle Row) Marten, a rare and valuable fur bearer, where not killed out, is common Porcupine, is a common faunal type in the Canadian and Hudsonian Zones; the part found in bushy coulées on the prairies.

(Lower Row) Three typical habitat scenes, the Hudsonian Zone at about 2,000 northern Ontario; and mixed forest of spruce, poplar, and white birch typical of the